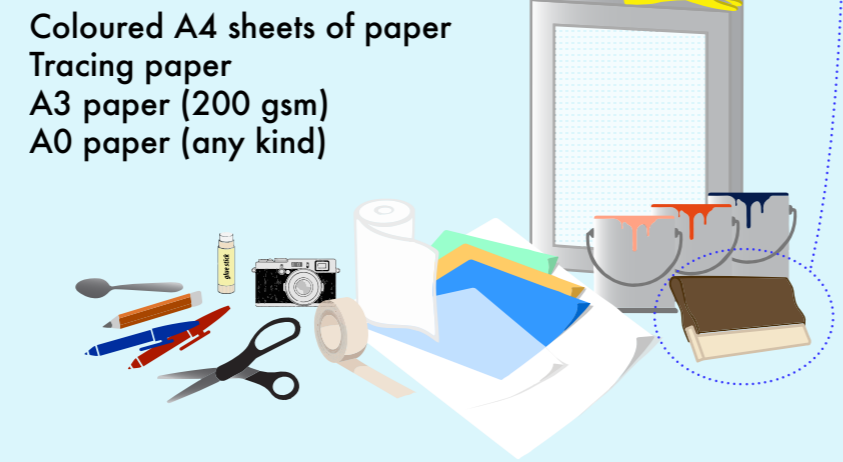


SCREEN PRINTING: THE PROCESS

- SETUP**
- 1) Have lots of rags ready to keep hands clean
 - 2) Make sure to get all equipment ready before you start printing (individual spoons for each colour)
 - 3) Keep clean paper away from dirty print area

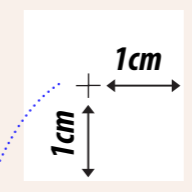
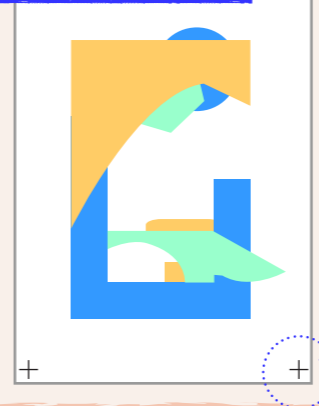
- EQUIPMENT**
- Pencil and Pens - two different colours
 - Scissors/scalpal
 - Masking tape
 - Gluestick
 - A3 sized printing screen
 - 3 paint colours
 - Squeegee
 - Spoon or similar
 - Paper towel for cleaning spills
 - Rubber gloves



WHAT IS A SQUEEGEE

Squeegee is a peice of rubber with a handle used to squeeze the ink through the screen.

STEP 3 REGISTRATION PTS



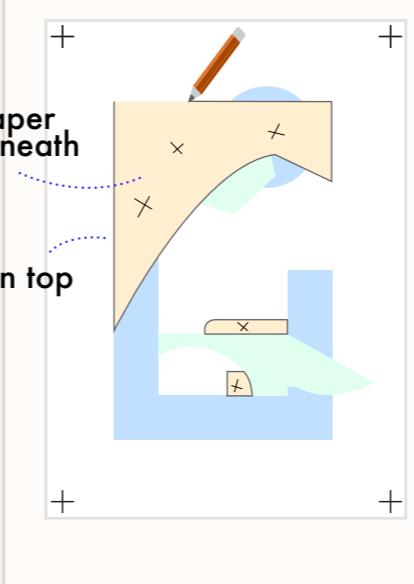
Take a photo of the page as a reference and stick the coloured paper down.

Create registration points that are 1cm x 1cm out from the corner of A3 page.

REGISTRATION POINTS:
We need these so we can return our artwork to the same spot every time we print.

STEP 4 MARKING & TRACING

A3 paper underneath
Tracing paper on top



Overlay tracing paper onto artwork and trace over the registration marks in pencil.

Trace over the outlines of the shapes for just one colour.

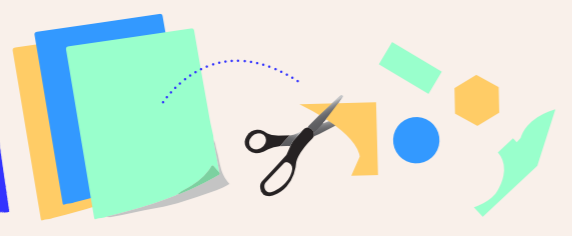
Mark these shapes with 'X'.

Repeat STEP 4 for all colours, ready for cutting out (step 5).

TIP: So if you have 3 colours on your artwork, you should have 3 stencils from which to screen print.

SECTION 1: PREPARING ARTWORK

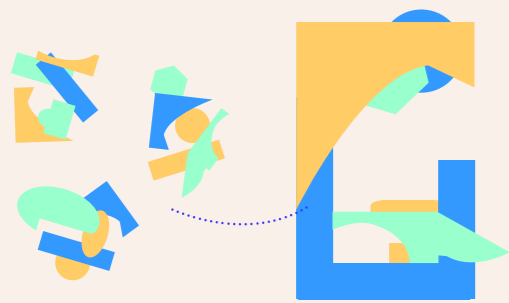
STEP 1 CUTOUT



Individually, cut shapes from coloured paper and collage these onto an A3 sheet.

Consider geometric vs organic shapes.

STEP 2 COLLABORATE TO MAKE ONE ARTWORK

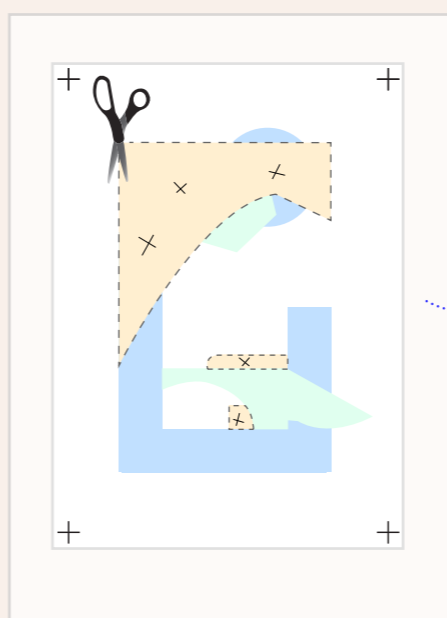


Groups must combine their artworks, using at least one shape from each student's work to form just one A3 artwork.

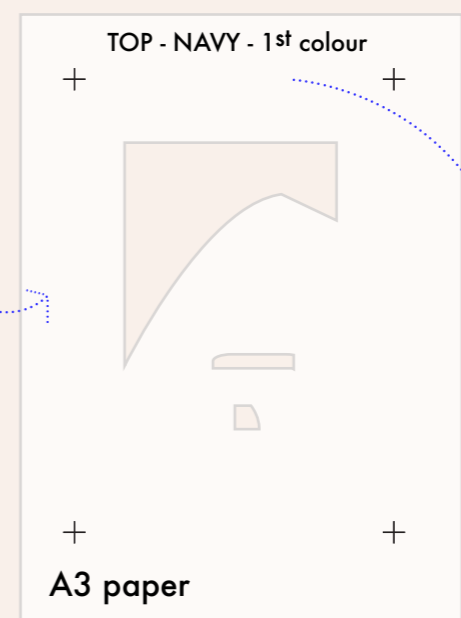
To do this, groups may want to consider the below questions when reviewing each other's work...

- Which intersections are working well?
- What proportion might you want to create for your final artwork?
- What style and/or shapes do you want to go with - geometric vs. organic?
- How might you create a balanced combination of geometric and organic shapes...

STEP 5 CUT OUT STENCIL



Before cutout



Stencil complete

Cut out 'X' areas with scissors.

Issue with a tear? Use masking tape to reconnect any breaks.

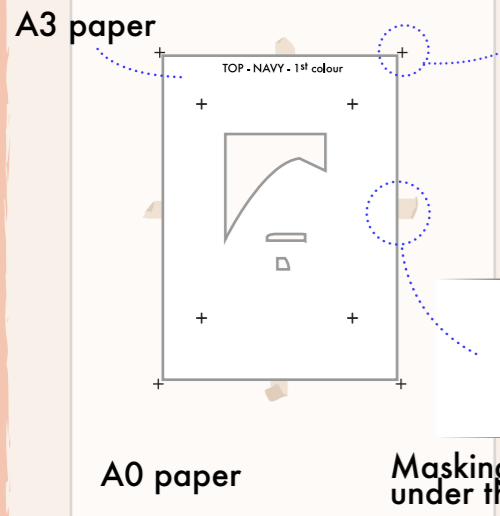
Label the order of the colours on the top of your page (this reminds you about the direction of the print as well as the order of printed colours).

TIP:
Overlapping areas of stencil will produce mixed colour on paper. Consider this when designing the order of your layers.

SCREEN PRINTING: THE PROCESS

SECTION 2: PRINTING

STEP 6 ATTACHING PAPER TO SCREEN



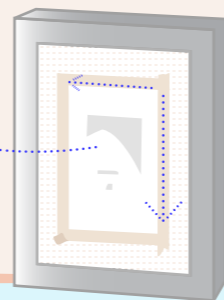
Lay your artwork onto an A0 piece of paper and mark in **registration points** where the A3 paper ends (do all 4 corners).

With your stencil facing up on the A0 paper, place a small amount of tape on each side, sticky side facing upwards.

Place A3 Screen directly on top and **press masking tape to screen**.

Turn the screen over and **tape all lengths of your stencil**.

Place screen back onto A0 paper and align it with the A3 registration marks. **Mark in the edges of the A3 screen also.**



STEP 7 ALIGNING SCREEN

Check the A3 screen is marked out and aligned to screen registration marks. Use something to slightly prop up the screen (thin book/foam core or similar).

This prop up will allow you to flood the screen with paint without it bleeding underneath...



STEP 8 - FLOODING

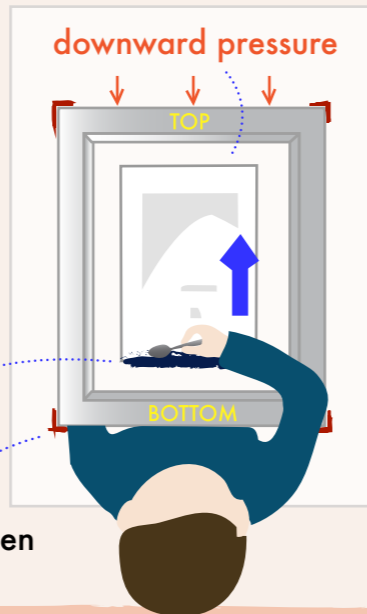
Use downward pressure to keep screen in place

Pair can hold screen down

Apply paint with a spoon or similar to the edge of the stencil (closest edge to you)

** Ensure someone is still holding the screen in place

Mark edges of screen in different colour



WHAT IS FLOODING

flooding is when you fill the stencil with ink before printing. Ink is applied across the screen away from your body. Check the stencil areas are all covered with ink.

STEP 9 SCREEN PRINT

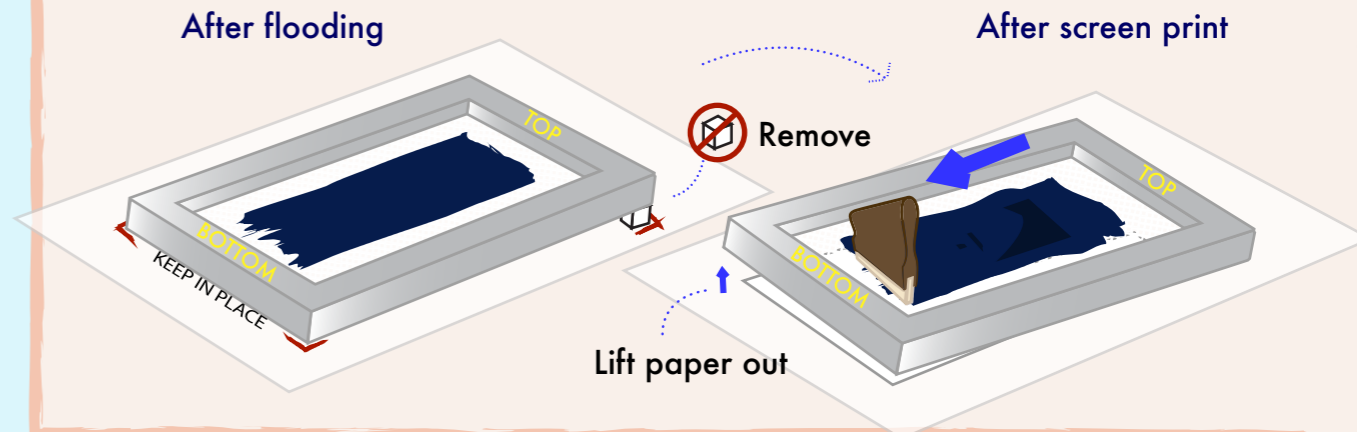
Create the screen print!
Once the screen has an even coating of paint...

Lift the screen and **remove the element** then place the screen flat onto the paper

Ensure the screen is held down firmly (aligned with the registration marks).

Pull the squeegee back towards you (top to bottom), then lift the screen to review print.

(paper might need to be peeled off slowly if this gets stuck)



STEP 10 CREATING MULTIPLE COPIES

Create screen print **EDITIONS**.

Place another paper under the screen before you wash it... and repeat second screen print. (only wash screen when applying next colour)

Repeat screen print process for each edition.

STEP 11 START LAYERING SCREENS

Create the 2nd screen print **COLOUR**.

TIP: Check ink is dry by touching with your finger on the very edge of the print. Print must be dry before the next colour is added.

Wash the screen and repeat steps 7, 8 & 9. **Print each colour on each edition.** Continue this process for each colour.



STEP 12

CLEANUP



Screens must be washed with water within 10mins of being used to ensure the paint does not set within the screen.

Dry the screen with paper towel or drip dry.

Wipe all surfaces and place excess paper in bins. Check for spills on floor, clear walkways.

RETURN all materials to their designated area.