

# How do Victorian Secondary schools present 'literacy' in the 21st century and is this influenced by a school's socio-economic status?

Limiting 'literacy' to reading and writing has been a major cause of 'educational lockout' for many Australian students. In contrast, research suggests superior educational outcomes are achieved by teaching multiple literacies utilising many sensory modes. To determine Victorian Secondary school 'literacy values' a mixed method study was used to compare literacy language (specifically 'Conventional' & 'Digital') on LOW & HIGH Socio-economic status (SES) school websites.



LOW SES School Websites



HIGH SES School Websites

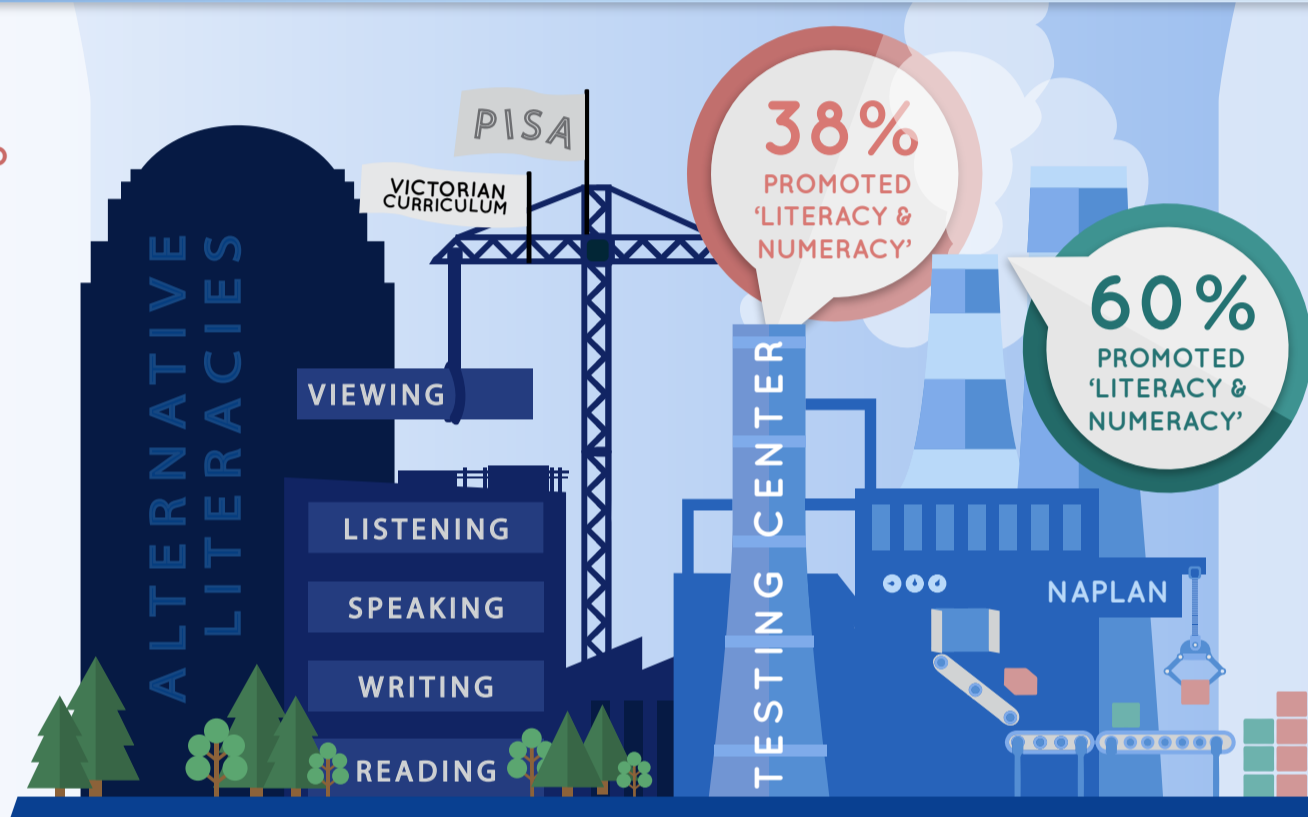


## CONVENTIONAL LITERACY:

A shift from 'literacy' to 'literacies' was evident across many schools, however more so for LOW SES school websites.

LOW SES schools were twice as likely to explore literacy through multiple modes and embrace alternative literacies e.g. 'digital literacy' & 'financial literacy'.

This approach is supported by the Victorian Curriculum and by international PISA<sup>2</sup> assessments.



HIGH SES schools emphasised 'literacy' via mission statements, promoting the importance of 'literacy & numeracy'.

This suggests that standardised assessments (e.g. NAPLAN) influence schools literacy values.



## DIGITAL LITERACY:

'Digital literacy' (literacy in digital spaces) was promoted by a majority of schools, however more so for HIGH SES school websites.

85% of ALL schools encouraged the use of 'digital technologies' to support literacy.

'Digital Literacy' was subtly represented by various digital related terms e.g. 'e-learning' 'technological literacy' 'multimodal learning'.

59% of ALL schools implemented a 'digital technology programme'.

STRENGTH of digital literacy

56% HAD DIGITAL RELATED TABS

The promotion of 'Digital Literacy' is supported by discourses linked to political, economic and social factors.

HIGH SES schools are powered by greater levels of digital discourse. This is due to superior funding, digital resources and other community influences.

<sup>1</sup> Socio-economic Status (SES): measured by an ICSEA (Index of Community Socio-educational Advantage) Value (source - www.myschool.edu.au)

<sup>2</sup> PISA: Programme for International Student Assessment

