

VISUAL STEPS TO CREATING A PENCIL CASE

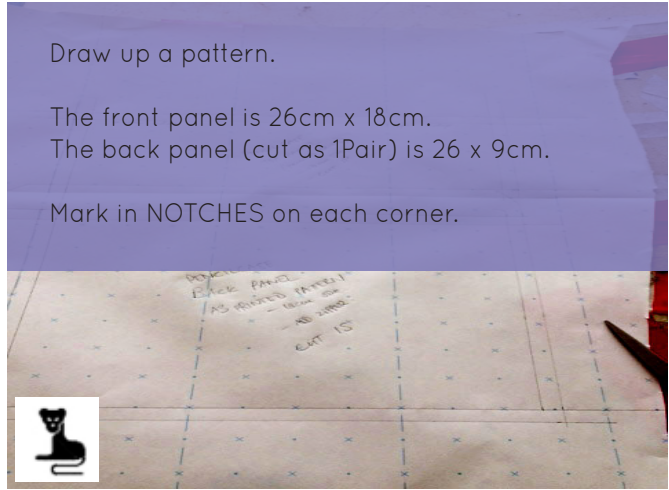
WITH WRITTEN INSTRUCTIONS

SEE WRITTEN DESCRIPTIONS FOR EACH STAGE BELOW...

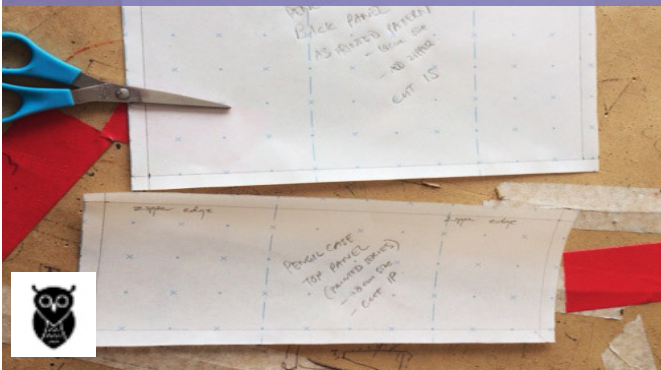
Draw up a pattern.

The front panel is 26cm x 18cm.
The back panel (cut as 1Pair) is 26 x 9cm.

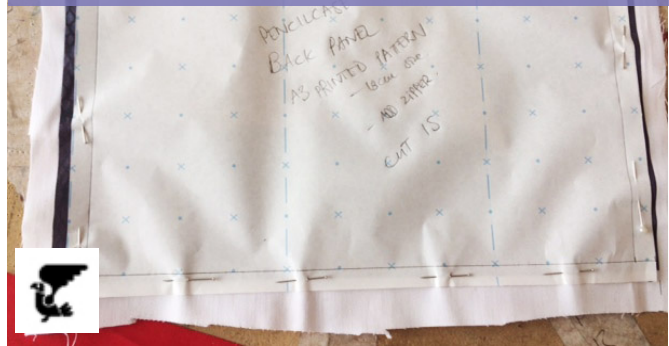
Mark in NOTCHES on each corner.



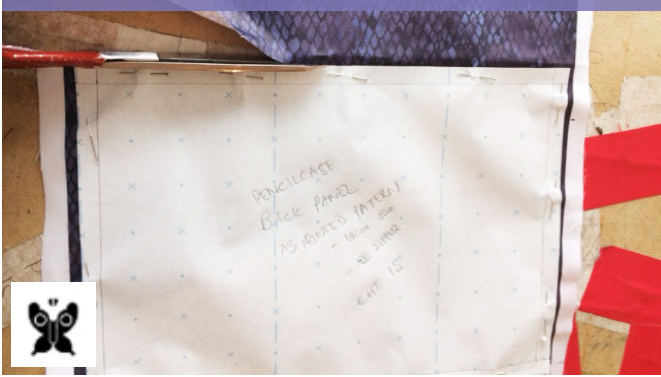
Add seam allowance of 1cm around each panel piece and cut them out.



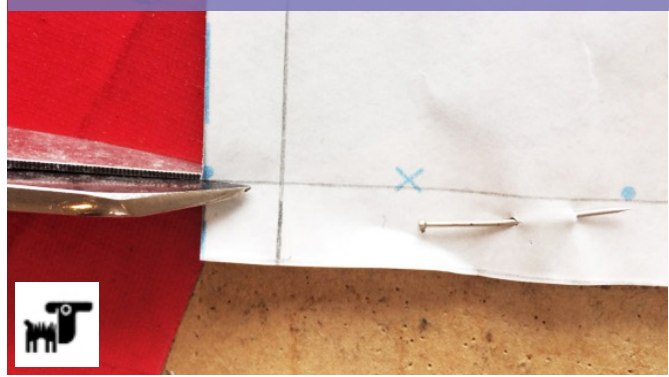
Pin your patterns to the fabric. Pin inside the seam allowance so the fabric doesn't get damaged.



Cut out around the pattern piece.



Snip the notches.

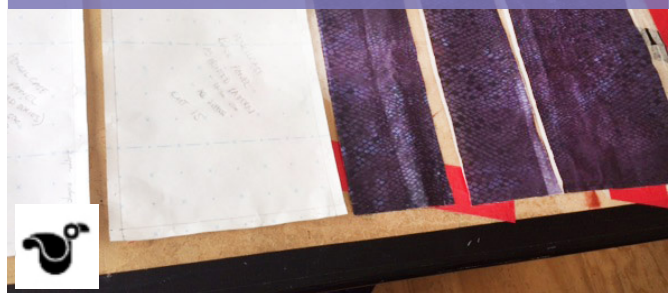


Notches on the corners should look like this...



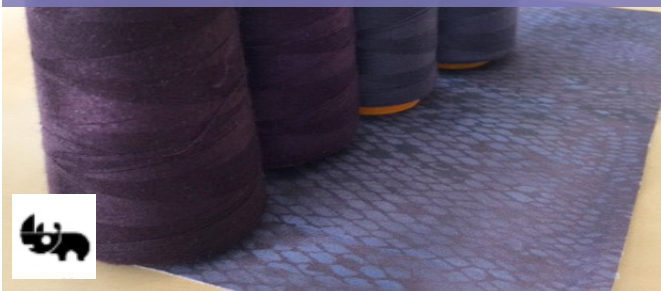
Gather all your pattern pieces and cut pieces together.

Place paper pattern to the side for now.



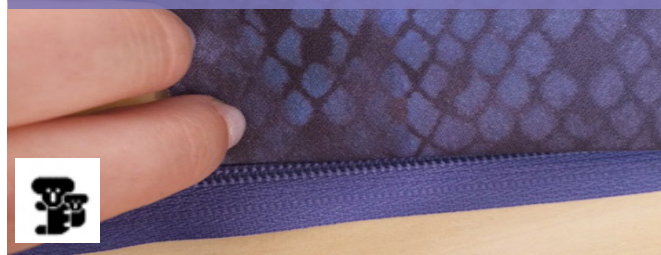
Choose the best matching thread colour that will work with your fabric.

These shown are for overlocking.



Choose a coloured zipper that will work with your design.

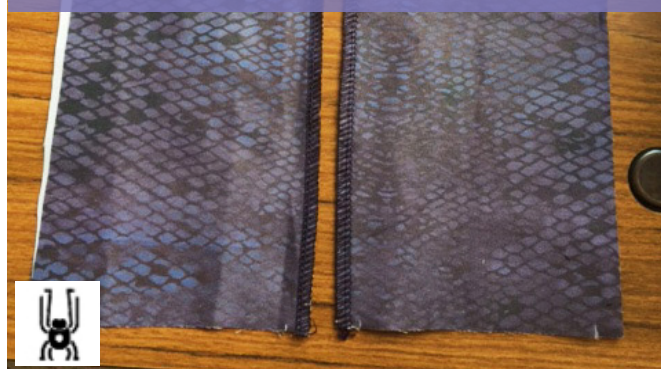
I have compared two and gone with the darker navy colour.



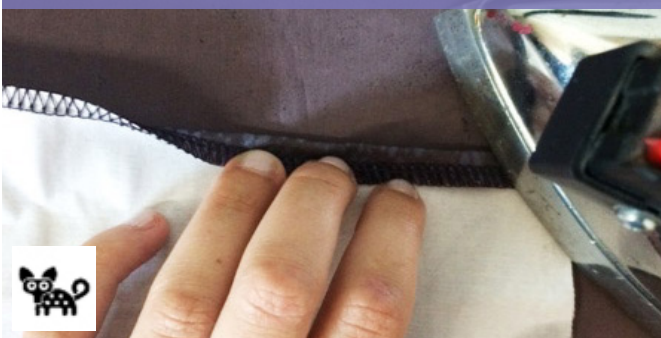
Overlock the inside edge of your two back panels (only on one long side)



Your fabric should now look like this.



Iron this overlocked edge back 1cm. Use the notch marks as a guide when doing this.



Your fabric should now have two folded edges like shown.



Align one folded edge to the zipper. REMEMBER to make sure you have at least 1cm of main fabric that sits past the zipper head.



Pull the zipper down a little and align your zipper and fabric under the machine.



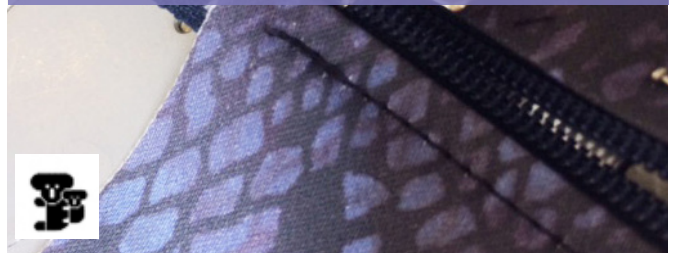
Stitch the zipper the fabric by top stitching over them.

REMEMBER to use the zipper foot as a guide and watch the fabric not the needle when sewing.



REPEAT the process for the other side of the zipper.

REMEMBER to start at the same point as the first zipper side.



The zipper and fabric should now be attached on both sides.



Do not cut the zipper length yet!



Reinforce the end of the zipper by stitching across it like shown.



Now can you cut the excess part of the zipper like shown...



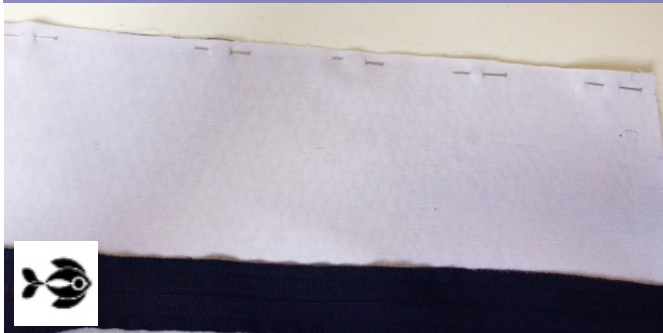
Grab both your back pieces (which are attached with the zipper) and your front piece.



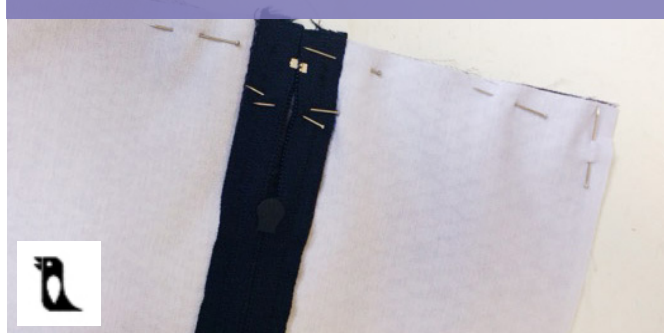
Place the fabric panels right sides together... ready to sew around the edges.



Match the panels around the edges and pin in place.



Pull the zipper down (so you can open it easily later) and reinforce it closed by placing pins in a cross lower down like shown...

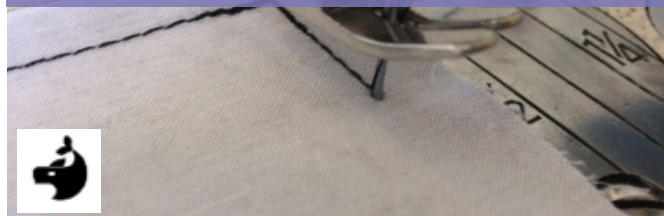


Sew with a 1cm seam allowance around the edges...



REMEMBER to PIVOT in the corners...

Do this by sewing to the corner and keeping the needle in the fabric. Then lifting the foot and moving the direction of the fabric. Foot down and keep sewing...



Sew around the whole panel like shown...



Overlock all the outside edges. Make sure to not cut into the sewn line... the overlocking should just trim the edge.



Your pencil case should now look like this!



Bag out the pencil case by pulling the zipper down and turning inside out.



Use something pointy to press out the corners...



Iron the pencil case, pressing on the corners and zipper.

Use LOW to MEDIUM HEAT.



DONE! Yours should look something like below...



SYMBOL CODING SYSTEM



TIPS FOR TEACHERS:

STUDENTS SHOULD BE AT A LEVEL WHERE THEY FEEL COMFORTABLE ON THE MACHINE BUT MAY NOT HAVE ATTEMPTED A ZIPPER BEFORE.

GETTING STUDENTS TO SEW IN PAIRS AND MONITOR EACH OTHERS SAFETY CAN BE A GOOD IDEA. BY STUDENTS WATCHING AND EXPLAINING THE PROCESS TO EACH OTHER, WE CAN ENCOURAGE A MOVE TOWARDS INDEPENDENT LEARNING.

LITERACY SKILLS ARE BROUGHT INTO THIS TASK AS STUDENTS ANNOTATE. THEY MAY NOT WANT TO BOTHER WITH THIS SO I SUGGEST YOU MAKE THE ANNOTATIONS ESSENTIAL TO THE FINAL PRODUCT OR PART OF THE ASSESSMENT PROCESS.