

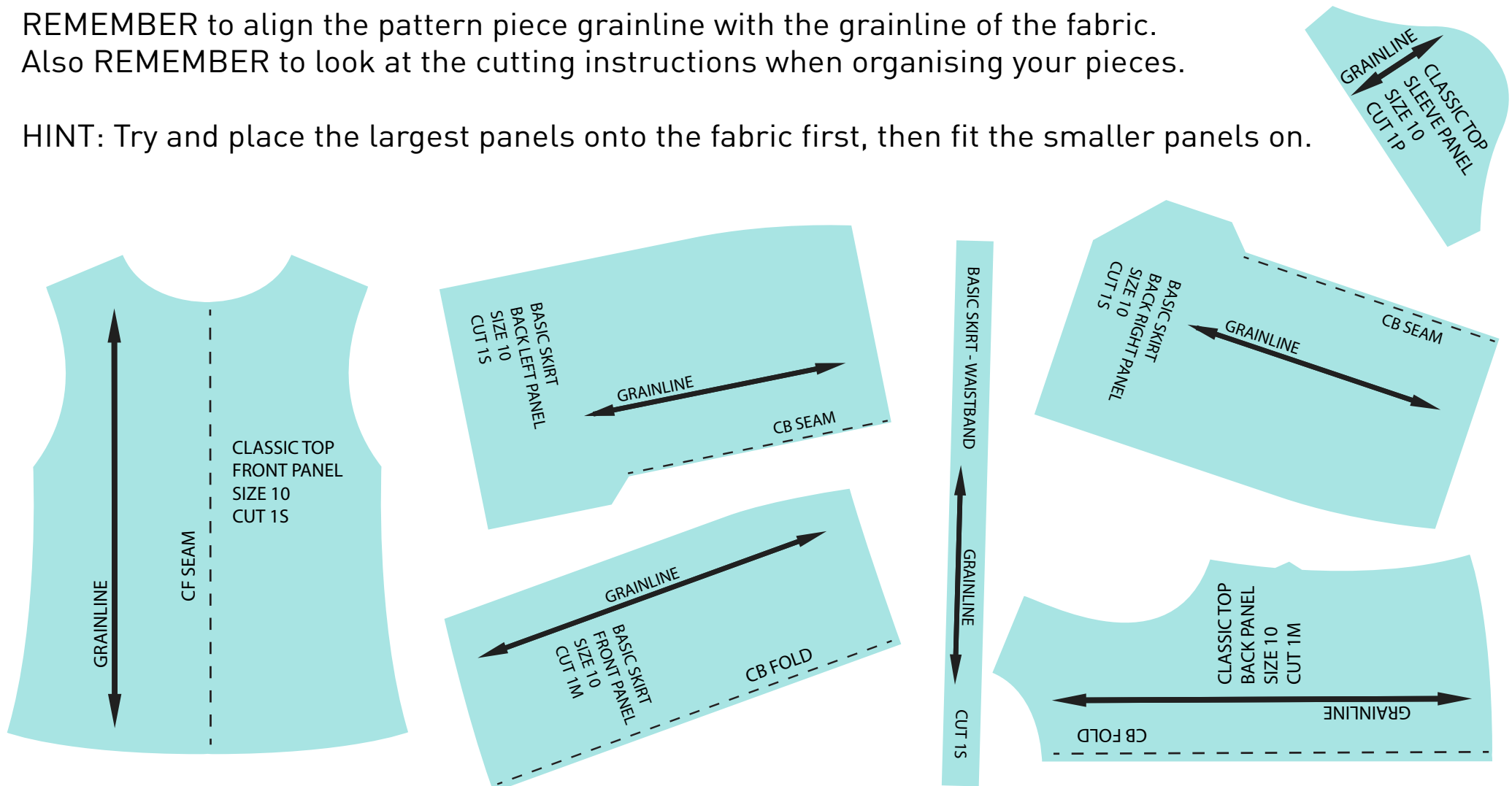
# PATTERN CUTTING TEST:

Pieces below to be used in final task.

Cut out the pattern pieces provided on each page and organise them onto the relevant fabric page (like you would if cutting fabric on real fabric).

REMEMBER to align the pattern piece grainline with the grainline of the fabric.  
Also REMEMBER to look at the cutting instructions when organising your pieces.

HINT: Try and place the largest panels onto the fabric first, then fit the smaller panels on.



# CUT PANELS FOR BASIC SKIRT PATTERN



TEST 01:

# FABRIC TO LAY YOUR BASIC SKIRT PATTERN

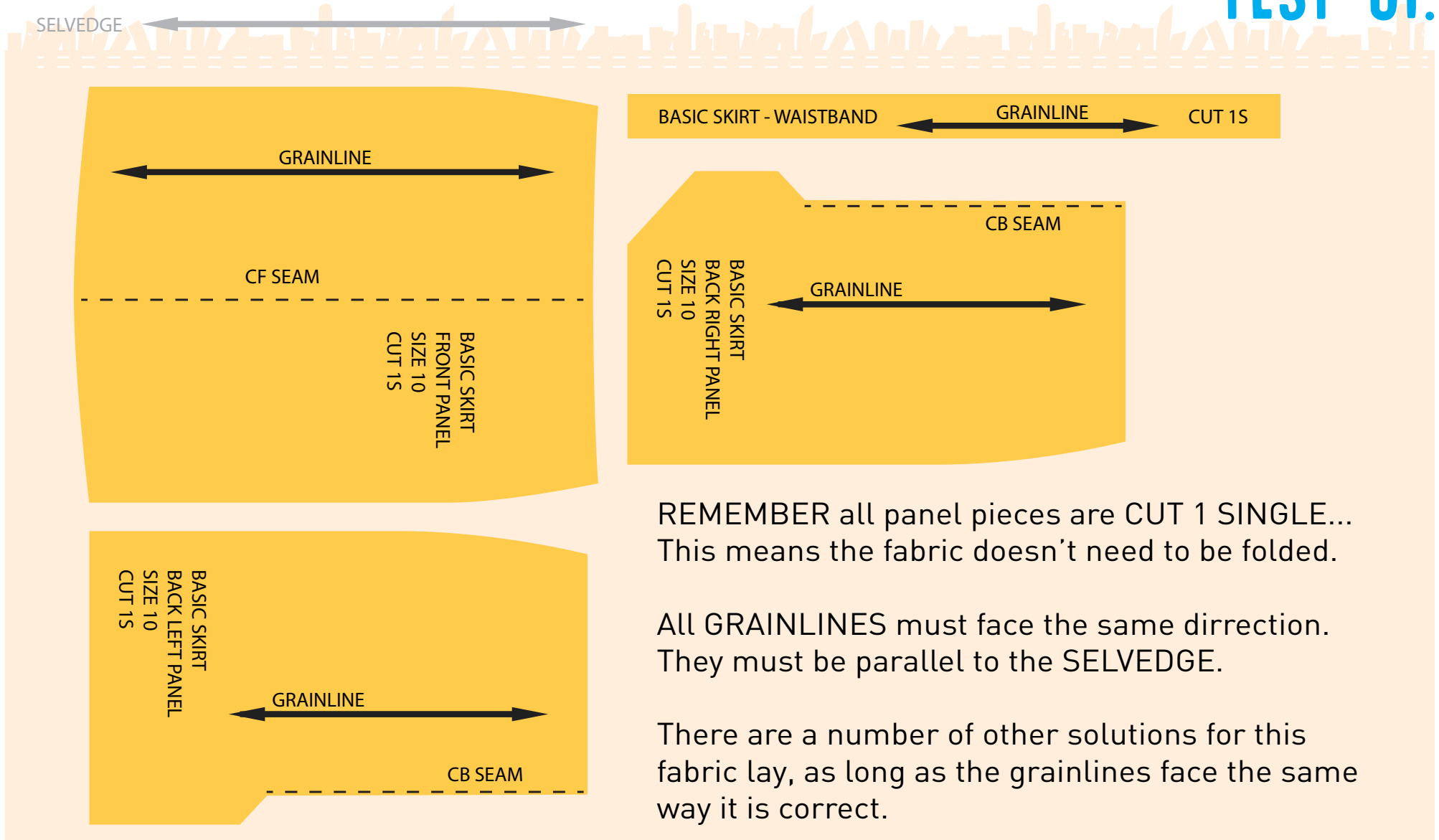
SELVEDGE



TEST 01:

# BASIC SKIRT PATTERN – A POSSIBLE SOLUTION

## TEST 01:

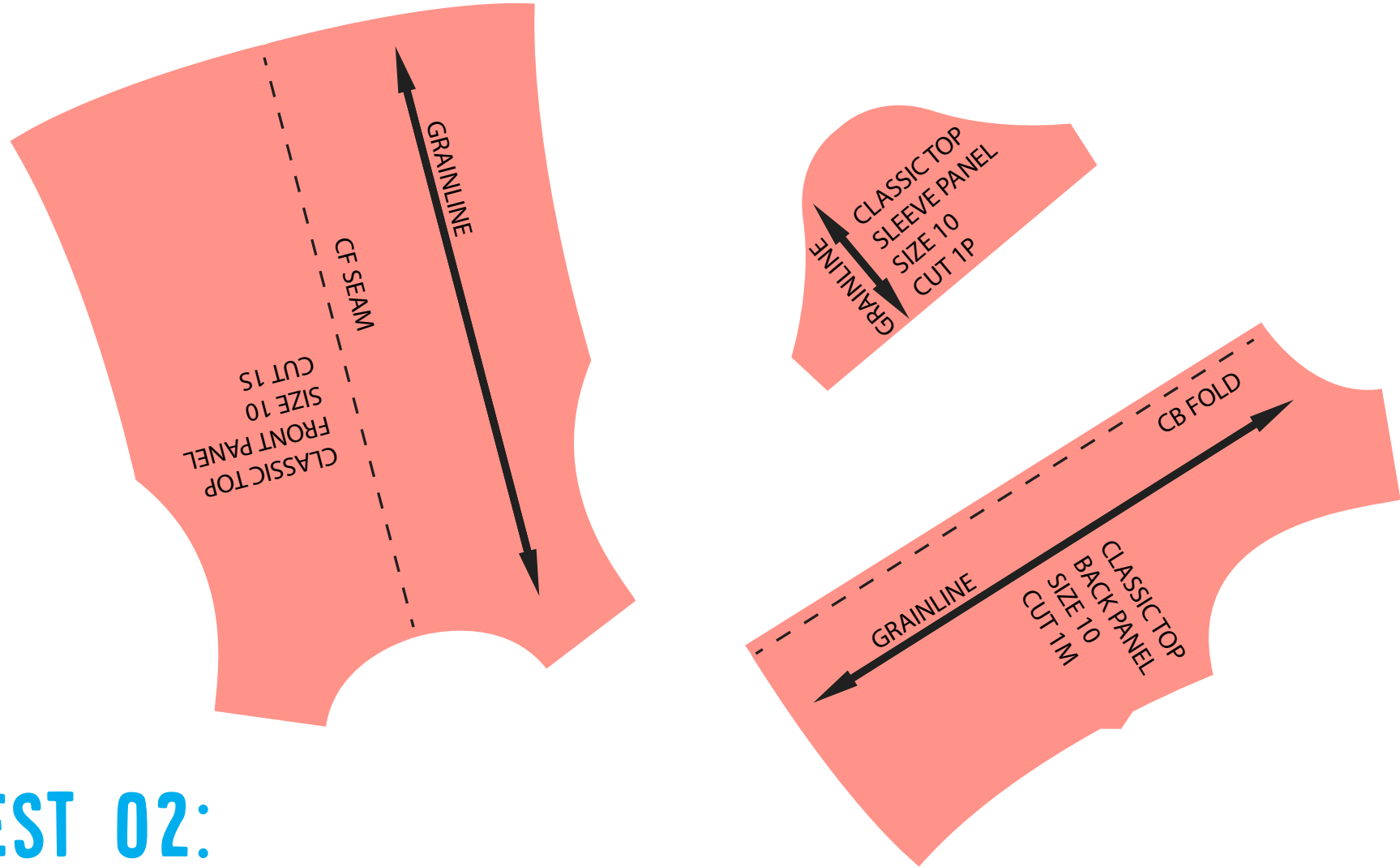


REMEMBER all panel pieces are CUT 1 SINGLE... This means the fabric doesn't need to be folded.

All GRAINLINES must face the same direction. They must be parallel to the SELVEDGE.

There are a number of other solutions for this fabric lay, as long as the grainlines face the same way it is correct.

# CUT PANELS FOR CLASSIC TOP PATTERN



TEST 02:

# FABRIC TO LAY YOUR CLASSIC TOP PATTERN

SELVEDGE



Fabric is folded in half in this section

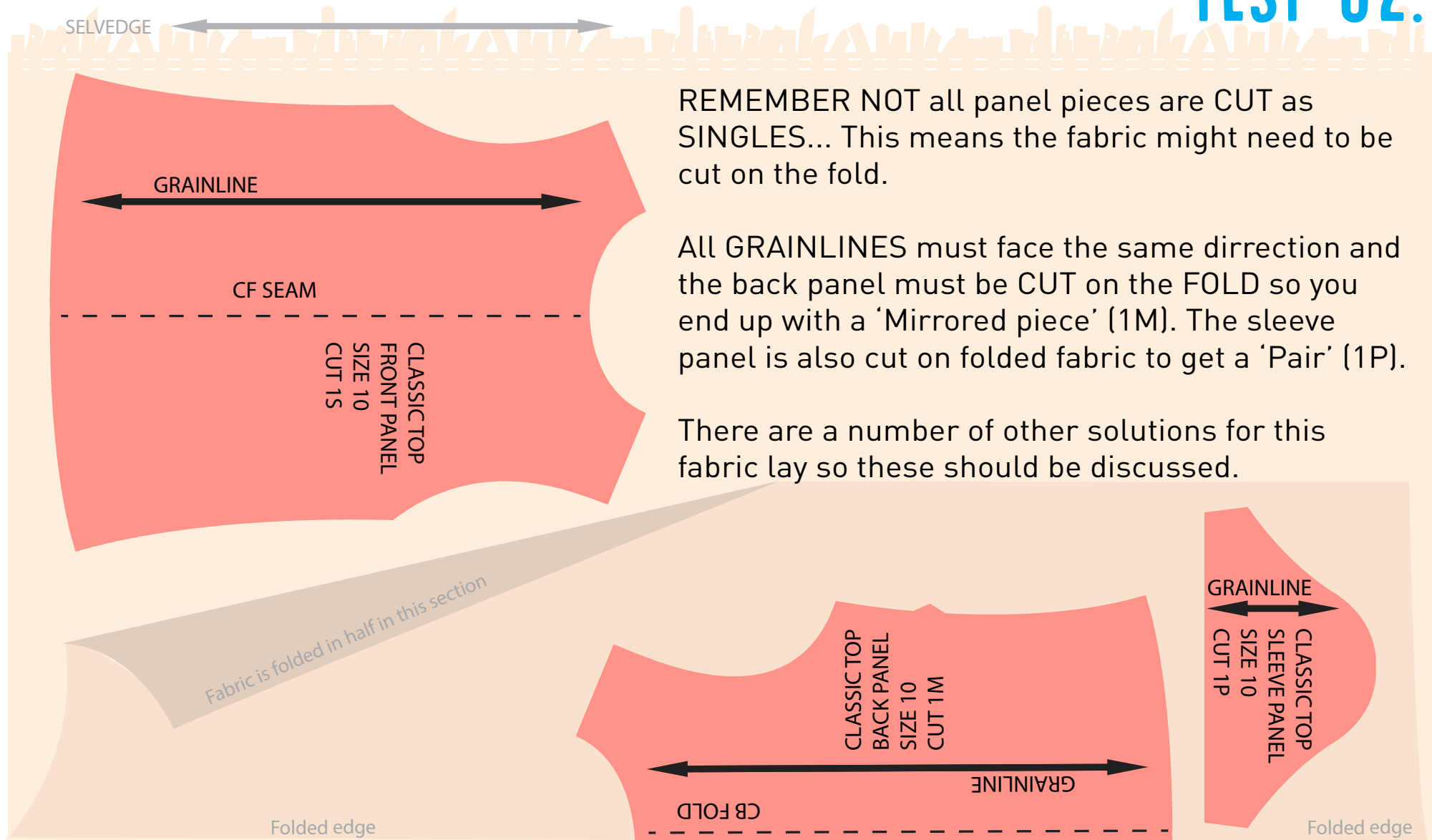
**TEST 02:**

Folded edge

Folded edge

# CLASSIC TOP PATTERN – A POSSIBLE SOLUTION

## TEST 02:



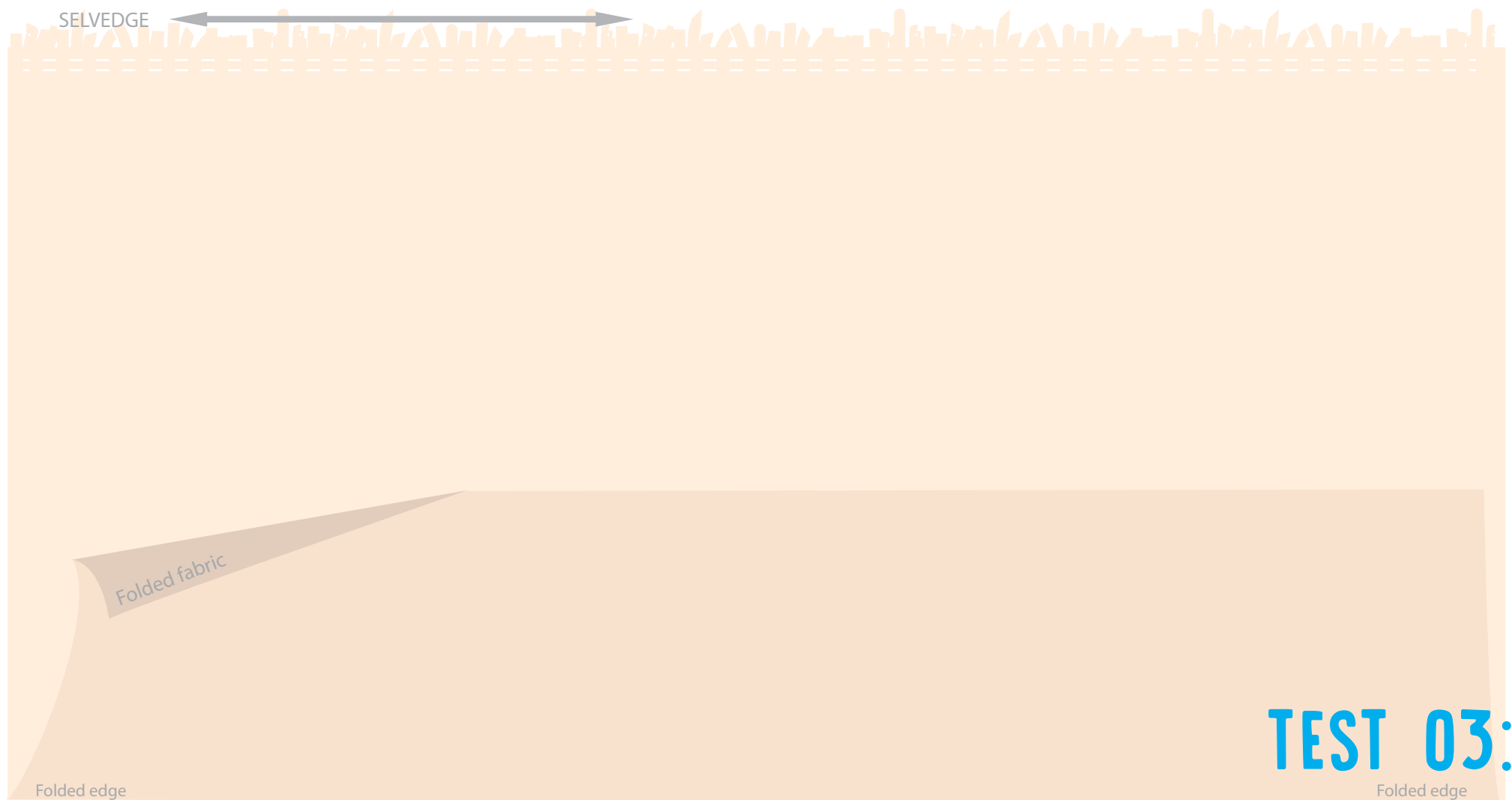
REMEMBER NOT all panel pieces are CUT as SINGLES... This means the fabric might need to be cut on the fold.

All GRAINLINES must face the same direction and the back panel must be CUT on the FOLD so you end up with a 'Mirrored piece' (1M). The sleeve panel is also cut on folded fabric to get a 'Pair' (1P).

There are a number of other solutions for this fabric lay so these should be discussed.

# EXTENSION TASK: LAY ALL PANEL PIECES TOGETHER

For a CHALLENGE... try and lay panel pieces from the basic skirt and classic top together on the fabric. REMEMBER... grainline must be parallel to the selvedge and consider the cutting instructions.





# EXTENSION TASK: EXAMPLE SOLUTION

Half the panel pieces should be cut on the fold so the end result is either a PAIR or a MIRRORED PIECE. Other pattern pieces that are labelled as 1Single (1S) can be placed like shown or another way as long as the grainlines are parallel to the selvedge.

